



East Coast Bullbars (ECB Pty Ltd)

Tel: 07 3897 5700

Fax: 07 3283 1168

ecb@ecb.com.au www.ecb.com.au

29 Snook St
Clontarf QLD 4019
Australia

Po Box 122
Margate QLD 4019
Australia

EAH153SY

REPLACES: 15.12.16
REVISED: 16.02.17

FITTING INSTRUCTIONS

HOLDEN COLORADO 6/16on BIG TUBE WINCH PROTECTION BAR WITH FOG LIGHTS VEHICLE FRONTAL PROTECTION SYSTEM (VFPS) FOR AIR BAG & ADR COMPLIANT VEHICLES

Check installation hardware before commencing.

1. Lift bonnet
2. Remove two T20 Torx head screws from the guard liner per side and unplug fog lights.
3. Remove eight T20 Torx head screws from the top of grille, and five 10mm head bolts from under side of bumper. Pull outer edge of bumper outwards to unclip from guard and under headlight each side. Remove front bumper. **See figure 1.**
4. From under vehicle, remove four 10mm head bolts and two plastic push / pull clips from under plastic body guard. Remove plastic body guard.
5. Remove front bumper support, four 15mm head bolts from end of chassis. **See figure 2.**
6. Mark and cut left and right bumper retainers. **See figure 3.** Drill two pop rivets out of rear of retainer and remove. **Note: Blow filings clear and treat all exposed metal with a rust inhibitor.**
7. Align guard infill (supplied) with side of guard. Fit guard liner into slot at rear of infill. Using the infill as a guide mark and drill two 6mm holes on outer under edge of front guard. **Note: Blow filings clear and treat all exposed metal with a rust inhibitor.** Install using two M6 x 20 bolts, washers and nyloc nuts (supplied). Secure liner to infill using speed clips and original screws from the lower guard liner. Care must be taken when fitting infill on guard to ensure correct positioning so infill cannot rub on protection bar. **See figure 4.**
8. Mark and cut inner guards. **See figures 5 and 6.**
9. Using a die grinder or similar, enlarge front hole on the inside of rail large enough to fit 44mm spacer tube. **Note: Blow filings clear and treat all exposed metal with a rust inhibitor. See figure 7.**
10. Flatten out tab on the end of chassis rail so steel mount sits flush. **See figure 8.**
11. Fit ECB winch frame (supplied) onto chassis rail using M10 x 40 bolts, spring washer, flat washers and 50 x 25 x 6 washer plates (supplied) per side finger tight only. Fit M12 x 75 bolt, spring washer, flat washer and 44mm tube spacer (supplied) into front side hole on rail and M12 X 40 bolt, spring washer, flat washer and nut in rear side hole (supplied) per side. Ensure mount is central to body and level **and tighten all bolts. See figure 9.**
12. Mark and cut left and right air scoop. **See figures 10 and 11. Caution:** leave as much of this air dam in place as possible as cooling system of vehicle when driven under fully laden conditions (at close to maximum weight of vehicle and trailer combined), may be affected (original clips will snap, refit with ECB clips supplied).
13. Fit fairlead roller to front of ECB winch frame using bolts supplied with winch. **Finger tighten only.**



**WORLD'S BEST
ALLOY BULLBARS**

East Coast Bullbars (ECB Pty Ltd)

Tel: 07 3897 5700

Fax: 07 3283 1168

ecb@ecb.com.au www.ecb.com.au

29 Snook St
Clontarf QLD 4019
Australia

Po Box 122
Margate QLD 4019
Australia

14. Install control box mount (supplied) to rear of control box using bolts / nuts supplied with winch. **Note:** There are two control box brackets supplied with this bar. One to fit the Warn Winch (and similar) control box and Mean Mother angle section which is used with the control box mount included with the Mean Mother winch. Wire winch as per manufacturer's instructions. **See figure 12.**
15. Install winch into ECB winch frame using bolts supplied with winch. Attach control box to winch using two worm drive hose clamps (supplied) for Warn control box mount and Mean Mother control box mount as per instructions supplied with winch.
16. Remove bumper sensors and wiring harness and relocate into the parking sensor mounts fitted to the protection bar. Ensure silicon ring is attached to front of sensor. Sensor should be aligned with front of parking sensor mount. Rotate parking sensor mount to suit direction parking sensor was removed from vehicle. **See figures 13 and 14.** Zip tie wiring harness to channel using zip ties (supplied).
17. Mark and cut bumper under headlights and across under grille. **See figures 15 and 16.**
18. Refit bumper in the reverse step of 2 and 3.
19. Fit ECB LED indicator / park lights /DRL into protection bar as per instructions supplied with the LED indicator kit. **See figure 17.**
20. Splice ECB wiring harness into wiring harness behind headlight using cable locks (supplied). Ensure harness is clear of sharp edges and moving parts.
21. Connect ECB Quick Click fog light wiring harness (supplied) into original wiring harness.
22. Attach ECB fog lights to protection bar. Place M6 x 20 bolts, spring washers (supplied) through light mount from inside and attach nut to top. Slide assembly into light mount in Protection bar and centralize light to hole. **TIGHTEN FIRM ONLY. See figure 18.**
23. Attach 6mm clip lock trim (supplied) to top of ECB protection bar and skirt around winch opening. **NOTE:** Trim off lower edge on an angle so trim will sit flush with end of protection bar. **See figures 19, 20 and 21.**
24. Fit ECB protection bar onto steel mount and fix with bolts supplied, eight M12 x 40 bolts, flat washers, spring washers and nuts (supplied). Align protection bar and tighten all bolts. **See figures 22 and 23.**
25. Refit plastic body guard with original 10 mm head bolts at rear, fit two M10 x 35 bolts, spring washers and flat washers (supplied) in front holes and original clips in centre holes.
26. Check bumper sensors for correct operation.
27. Connect and check ECB lights for correct operation.
28. Install fog light surrounds (supplied) to fog light openings and winch openings. Large side of surround to inside of opening on lights and to rounded side of winch openings. **See figure 24**

ENSURE NUMBER PLATE IS CLEARLY VISABLE

Note: When fitting/refitting the licence plate to the vehicle, ensure there is no obstruction to licence plate vision in accordance with local authorities. If required relocate licence plate to an alternate location.



East Coast Bullbars (ECB Pty Ltd)

Tel: 07 3897 5700

Fax: 07 3283 1168

ecb@ecb.com.au www.ecb.com.au

29 Snook St
Clontarf QLD 4019
Australia

Po Box 122
Margate QLD 4019
Australia

WORLD'S BEST
ALLOY BULLBARS

Further VFPS Notes:

- a) Do not attach VFPS to the vehicle using anchorages not intended for this purpose (e.g. engine mounting bolts).
- b) Do not use this product for any vehicle make or model, other than those specified by the VFPS manufacturer.
- c) Do not remove the plaque or label from the VFPS.
- d) Do not modify the structure of the VFPS in any way.
- e) No accessory or fitment should project forward of the VFPS forward profile.
- f) **ENSURE THESE INSTRUCTIONS ARE LEFT WITH VEHICLE OWNER AND/OR OPERATOR.**

IMPORTANT INFORMATION

Periodically check bolts and nuts for correct tightness, especially if travelling on rough roads

FITTING KIT

1 – ECB Winch Frame	6 – M10 spring washers
1 – Pair ECB Guard infills– IN KIT	6 – M10 x 1.25 nuts
1 – Warn winch control bracket (WIN_CONT_B4MS)– IN KIT	6 – M6 x 20 bolts
1 – Mean Mother winch bracket (MOTHERCB_B4MS)– IN KIT	8 – M6 flat washers
2 – 15nb tube spacers, 44mm long	2 – M6 spring washers
2 – 100mm worm drive hose clamps	4 – M6 nyloc nuts
4 – Washer plates 50 x 25 x 6	2 – M6 Nuts
10 – M12 x 1.75 x40 bolts	1 – ECB indicator / park kit/ DRL (ICLED105ECB)
2 – M12 x 1.75 x 75 bolts	8 – Cable locks
24 – M12 flat washers	4 – Fog light surrounds
12 – M12 spring washers	1 – Fog light kit
12 – M12 x 1.75 nuts	1 – ECB quick click (IC05D40S1004ECBH)
4 – M10 x 1.25 x 40 bolts	4 – Plastic screw scrivenets
14 – M10 flat washers	1 – 2350mm length 6mm clip lock trim
2 – M10 x 1.25 x 35 bolts	1 – 750mm length 6mm clip lock trim



Figure 1: Remove grille screws.

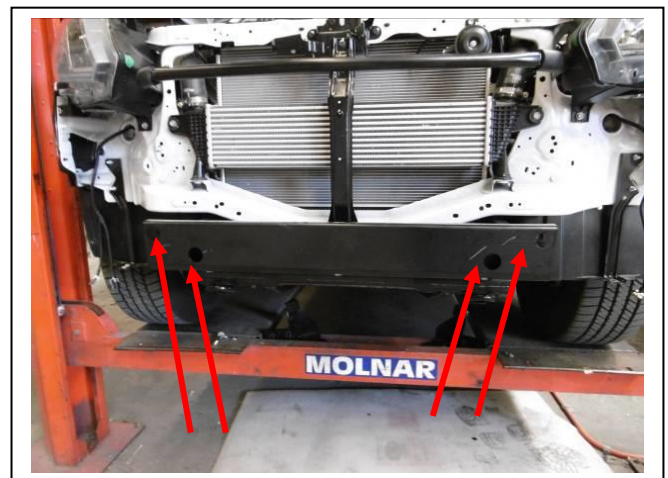


Figure 2: Remove bumper support



East Coast Bullbars (ECB Pty Ltd)

Tel: 07 3897 5700

Fax: 07 3283 1168

ecb@ecb.com.au www.ecb.com.au

29 Snook St
Clontarf QLD 4019
Australia

Po Box 122
Margate QLD 4019
Australia

WORLD'S BEST
ALLOY BULLBARS



Figure 3: Trim lower bumper retainer to front corner of guard.



Figure 4: Correct fitment of infill to guard on passenger side.

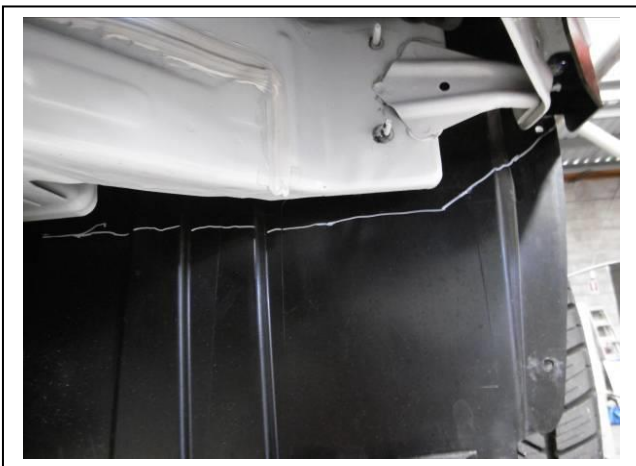


Figure 5: Trim line L/H liner



Figure 6: Trim line R/H liner

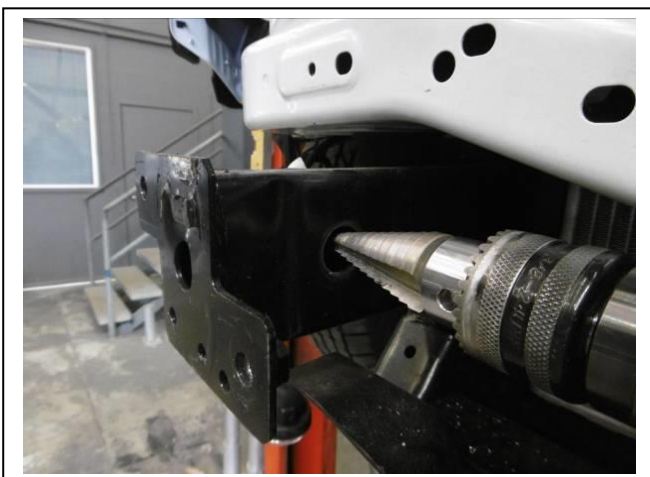


Figure 7: Enlarge hole to fit tube spacer.

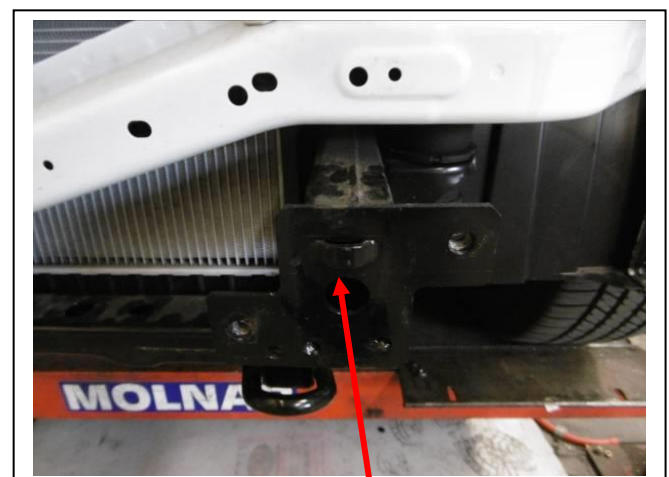


Figure 8: Flatten down tab.



East Coast Bullbars (ECB Pty Ltd)

Tel: 07 3897 5700

Fax: 07 3283 1168

ecb@ecb.com.au www.ecb.com.au

WORLD'S BEST
ALLOY BULLBARS

29 Snook St
Clontarf QLD 4019
Australia

Po Box 122
Margate QLD 4019
Australia

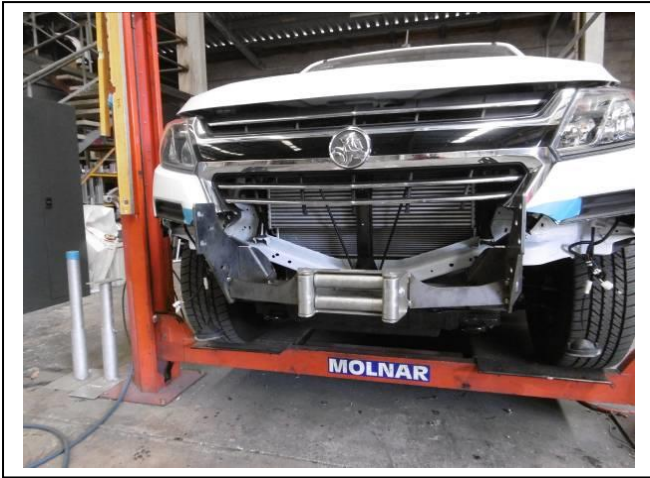


Figure 9: Winch frame fitted



Figure 10: Trim line L/H air scoop

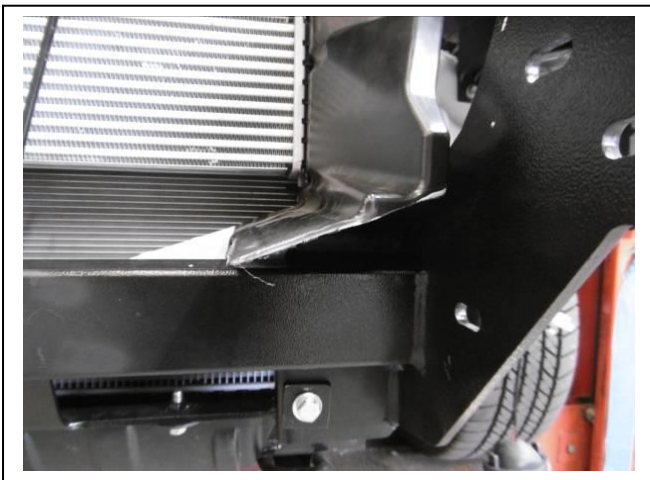


Figure 11: L/H air scoop fitted.



Figure 12: Install winch in winch frame as per manufacturer's instructions



Figure 13: Remove sensors and wiring from bumper bar.



Figure 14: Sensor fitted into housing in protection bar.



East Coast Bullbars (ECB Pty Ltd)

Tel: 07 3897 5700

Fax: 07 3283 1168

ecb@ecb.com.au www.ecb.com.au

WORLD'S BEST
ALLOY BULLBARS

29 Snook St
Clontarf QLD 4019
Australia

Po Box 122
Margate QLD 4019
Australia

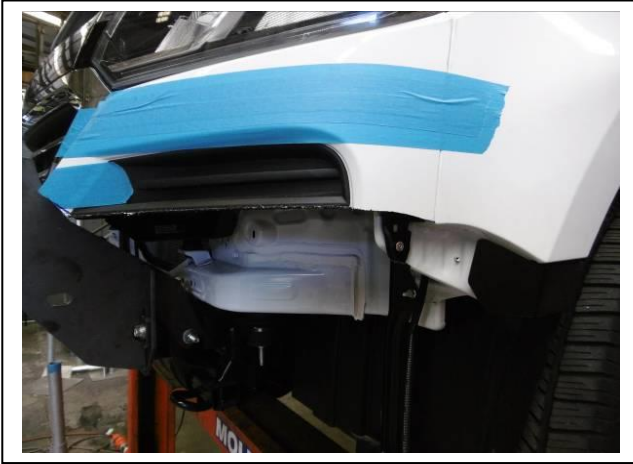
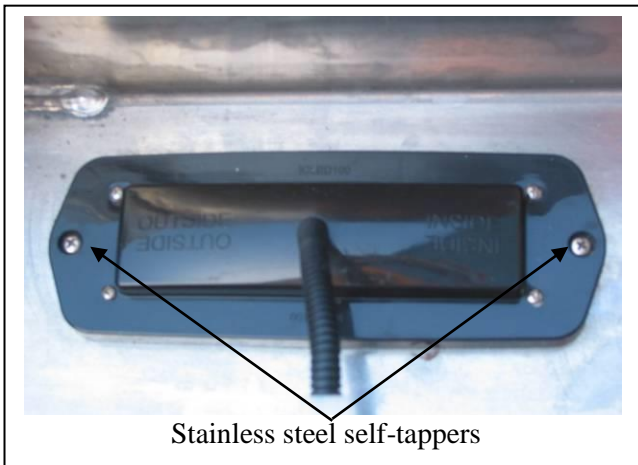


Figure 15: Cut bumper under headlight across to grille

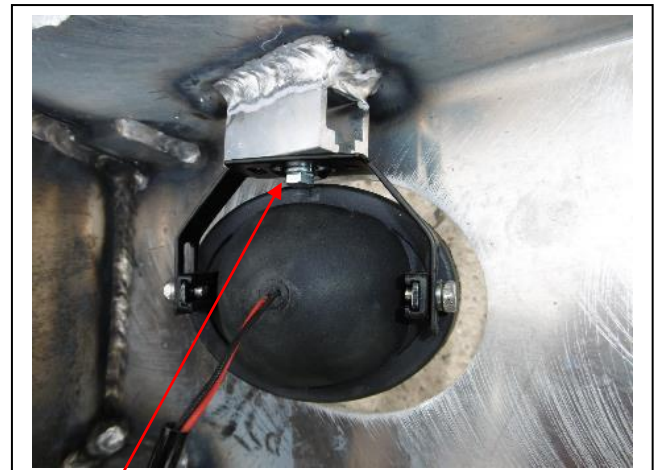


Figure 16: Cut across grille to fit over steel mount leaving grille mount on grille.



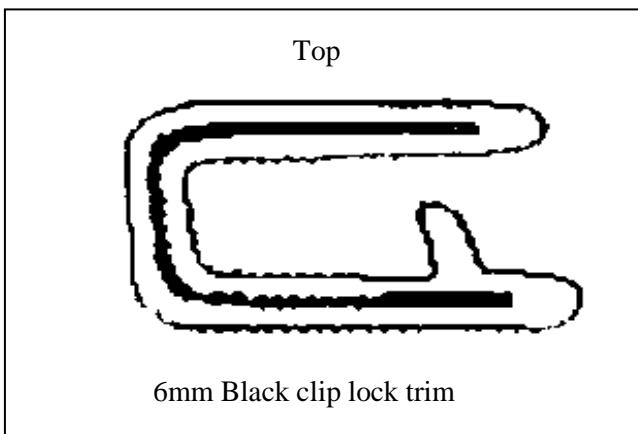
Stainless steel self-tappers

Figure 17



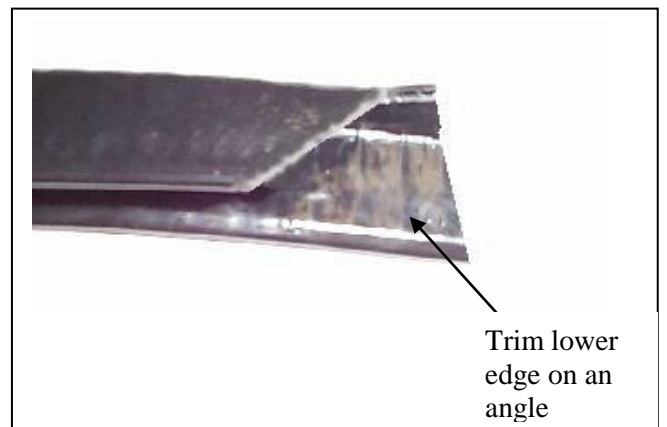
M6 bolt

Figure 18



6mm Black clip lock trim

Figure 19



Trim lower edge on an angle

Figure 20



**WORLD'S BEST
ALLOY BULLBARS**

East Coast Bullbars (ECB Pty Ltd)

Tel: 07 3897 5700

Fax: 07 3283 1168

ecb@ecb.com.au www.ecb.com.au

29 Snook St
Clontarf QLD 4019
Australia

Po Box 122
Margate QLD 4019
Australia

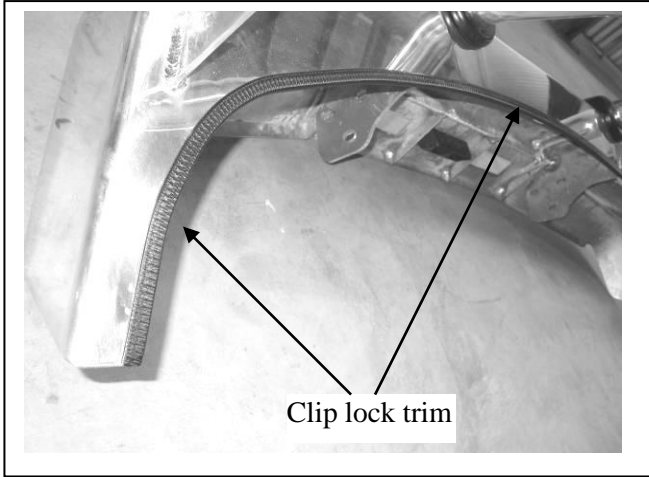


Figure 21



Figure 22: Front view.



Figure 23: Side view.

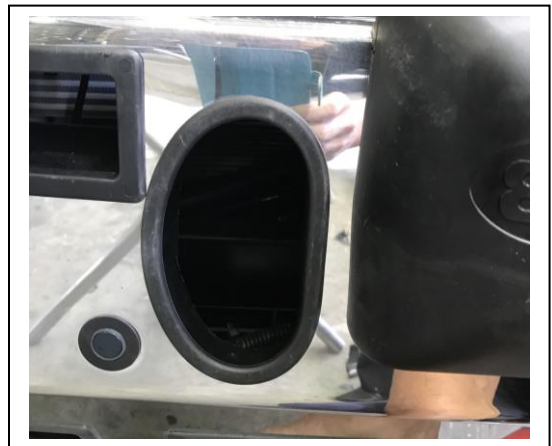


Figure 24: Oval cut out surround



**WORLD'S BEST
ALLOY BULLBARS**

East Coast Bullbars (ECB Pty Ltd)

Tel: 07 3897 5700

Fax: 07 3283 1168

ecb@ecb.com.au www.ecb.com.au

29 Snook St
Clontarf QLD 4019
Australia

Po Box 122
Margate QLD 4019
Australia

We value your comments

Dear Fitter,

ECB would like to know how you went with the installation of this product. We value your comment and may need to contact you to clarify some details so please complete your contact details clearly.

We would appreciate if you could complete as many of the following details as possible.

Your Name:	Your contact No.
Product Part No.	Product Invoice No.
Product Description:	Make, model, and year of vehicle:
Product Work Order No.	Company your from/Company product purchased from:

Date of Fitment: ____/____/____

Was the fitting hardware supplied complete?

Yes

No

If no what was not supplied

Did the installation go well?

Yes

No

Please provide comments

Please draw diagrams if you need to.

Post to

Reply Paid 122

PO Box 122

Margate QLD 4019

Fax to

(07) 3283 1168



WORLD'S BEST
ALLOY BULLBARS

East Coast Bullbars (ECB Pty Ltd)

Tel: 07 3897 5700

Fax: 07 3283 1168

ecb@ecb.com.au www.ecb.com.au

29 Snook St
Clontarf QLD 4019
Australia

Po Box 122
Margate QLD 4019
Australia

DESPATCH CHECKLIST EAH153SY

Work Order #		See other side of this page for photos of all mounts
Finish:		
Transport:		
Due Date:		

OC.....1– Steel winch frame.

OC.....2 – ECB Overriders – **Fitted to Bar**

OC.....5 – 6mm Air Vents – **Fitted to Bar**

OC.....4 – Parking Sensor mounts – **Fitted to Bar**

BK.....1 – Bolt Kit.

BK.....1 – LED ECB indicator / park light kit. / DRL (ICLED105ECB)

BK.....1 – Fog light kit

BK.....4 – Fog light surrounds

BK.....1 – 2350mm length 6mm clip lock

BK.....1 – 750mm length 6mm clip lock

_____/_____
Wrapper's initials / Checker initials



Is this product “the best it can be” Yes
If NO fix before continuing

All parts checked and completed by:

Nut and bolts: _____ Date __/__/__

Order control: _____ Date __/__/__

Final wrap check: _____ Date __/__/__



East Coast Bullbars (ECB Pty Ltd)

Tel: 07 3897 5700

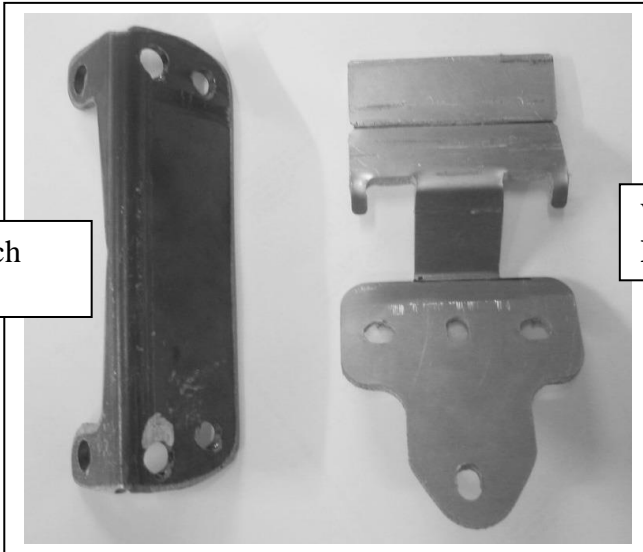
Fax: 07 3283 1168

ecb@ecb.com.au www.ecb.com.au

29 Snook St
Clontarf QLD 4019
Australia

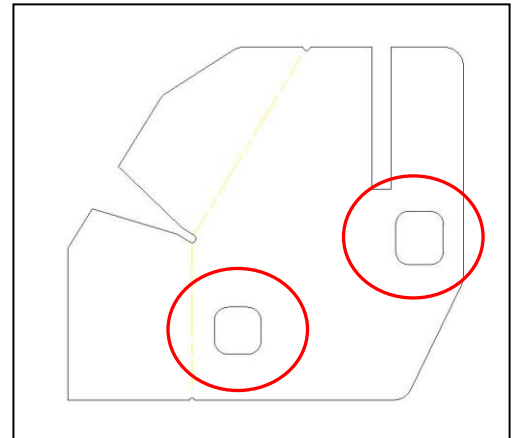
Po Box 122
Margate QLD 4019
Australia

WORLD'S BEST
ALLOY BULLBARS

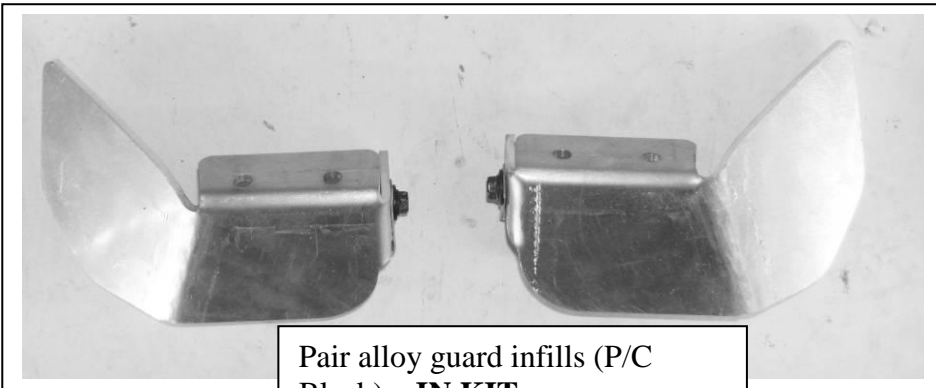


Mean Mother winch bracket - **IN KIT**

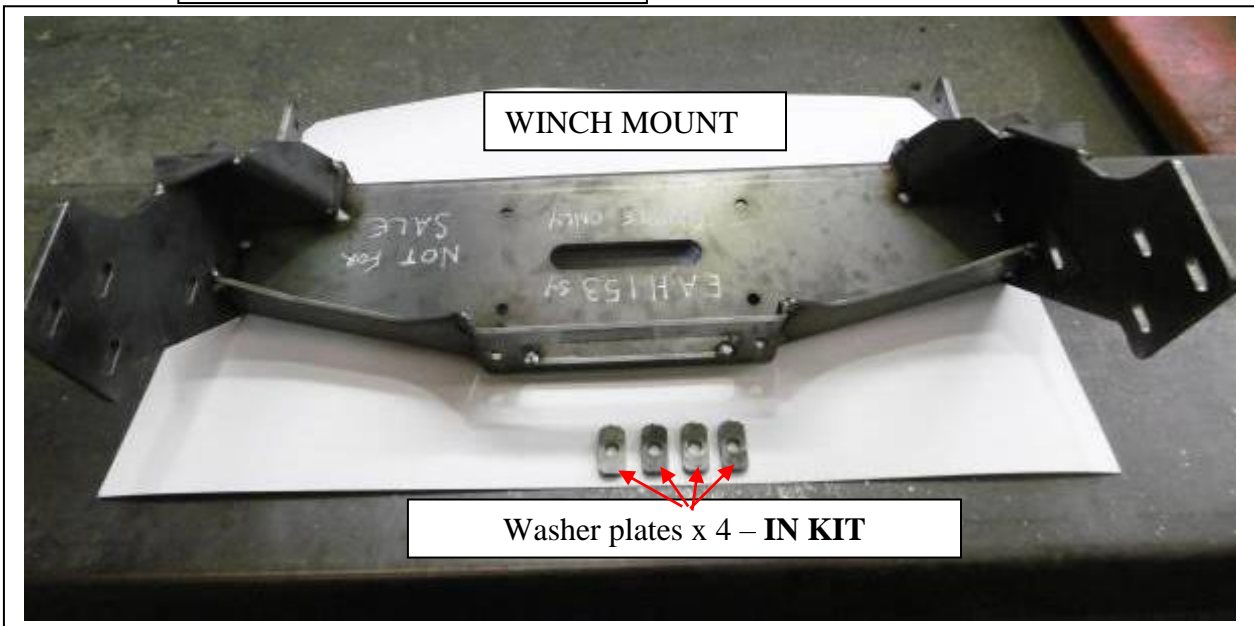
Warn winch bracket - **IN KIT**



Winch mount rear plate shape:
note size of holes



Pair alloy guard infills (P/C
Black) - **IN KIT**



WINCH MOUNT

Washer plates x 4 - **IN KIT**